

» TECHNICAL SPECIFICATIONS



39

 GRAND SOLEIL



» SAIL AREA

J	4,40 m
P	14,80 m
E	5,20 m
Main sail	49,6 m ²
Handy 106%	38,2 m ²
Sail Area	87,8 m ²

» SPECIFICATIONS

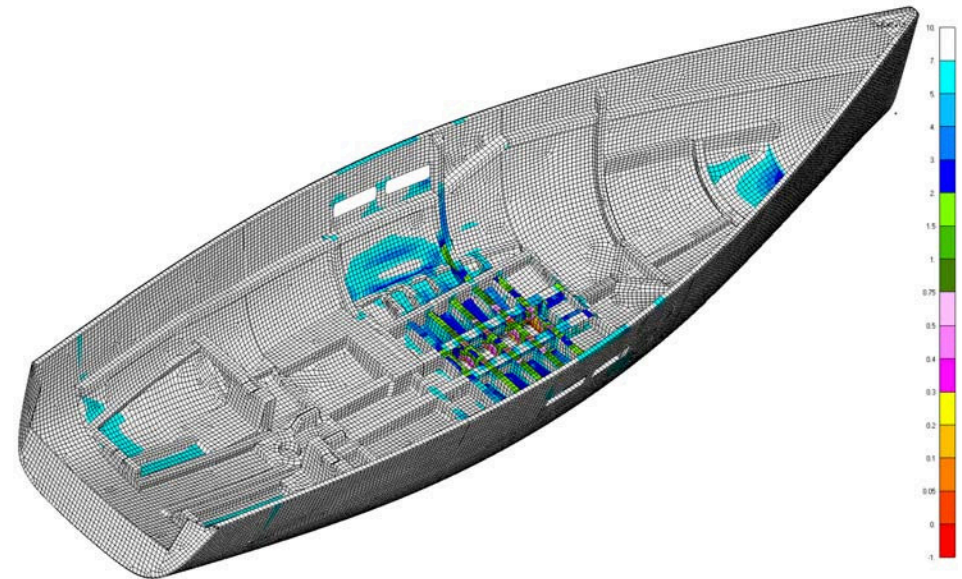
Length overall	11,82 m
Waterline Length	10,40 m
Beam max	3,70 m
Draft	2,40 / 2,10 m
Displacement	6.820 Kg
Ballast	2.450 Kg
Berths	6/8
Fuel tank	150 lt approx
Water tank	260 lt approx
Engine	Volvo 29 hp

Designer	Claudio Maletto
Exterior designer	Attivo Design
Interior designer	GS Design Team
Builder	Cantiere del Pardo
Certification	CE IMCI Classe A

» CONSTRUCTION

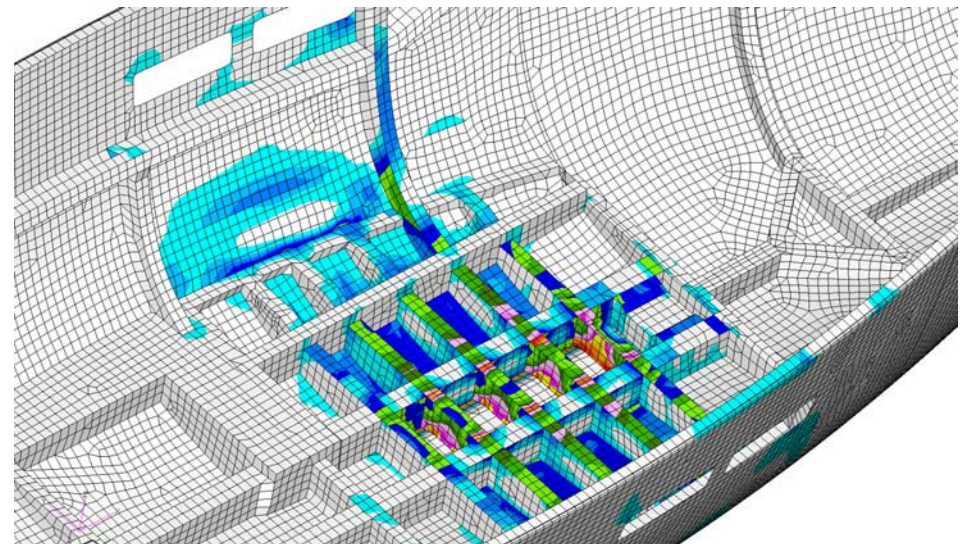
1.1 HULL

- The hull is in solid laminate to guarantee robustness and a long life. Compared to use of sandwich, solid laminate means there is a greater amount of fibre in the laminate (with a very slight weight difference for a boat of this size), giving it greater overall rigidity.
- Further biaxial and uni-directional glass fibre reinforcing is placed in high load areas to optimise strength and weight.
- The hull's outer surface is finished in white gelcoat with waterlines with an integral moulded boottop in navy blue gelcoat.
- Use of solid laminate around the keel, rudder and through hull fittings for maximum strength.



1.2 DECK

- The deck is a Termanto (high density foam) cored sandwich with structural inserts vacuum glued to the laminate for perfect adhesion.
- The deck area near the mast is reinforced and the core of the sandwich is made of marine plywood.
- Hull is assembled to the deck using methacrylic glue from the aerospace industry and mechanically bolted along the hull's upper flange.
- The hull reinforcing gridpan ,made from fibre and glass/ carbon composite, is fully laminated to the hull. An aerospace industry methacrylic glue is also added around the keel to guarantee sealing where the hull comes under the most stress. The grid absorbs the load from keel, mast and shroud.
- At structural joints between keelsons and floor stringers, the laminate is continuous for strength.
- Bronze counterplates are incorporated in the deck laminate for very strong attachment of stanchions, pulpit, pushpits and deck equipment.



1.3 KEEL

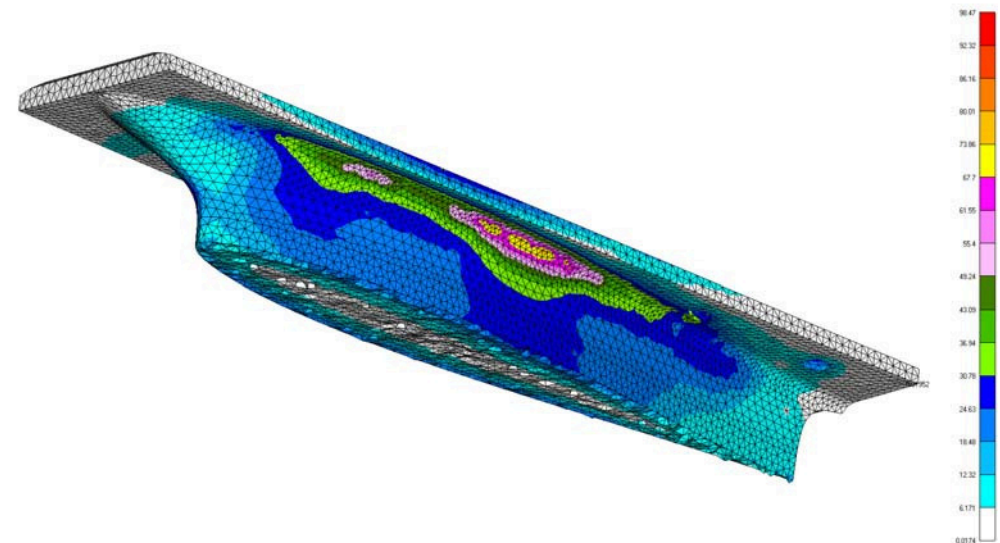
- The T-shaped keel guarantees high performance and stability.
- The bulb is made with a fusion of lead and antimony.
The fin is cast iron for mechanical resistance and to concentrate weight in the bulb thus increasing stability .
- The keel is coupled to the hull by means of a steel plate recessed to the hull to minimize friction and reduce local loads.
- Epoxy products are applied on the surface of the keel.

1.4 RUDDER

- The rudder is balanced and made of high-density expanded material.
- The rudder stock is made from stainless steel AISI 630.
- Steering wheel, quadrant and pulleys are by Solimar.
- The two steering wheels are in leather-covered stainless steel with 900 mm diameter.
- An emergency tiller is provided.

1.5 CHAIN PLATES

- The central chain plates are recessed to the hull, fixed to the bulwark and joined to the grid pan structure.
- The bow and stern chain plates are internally laminated to the hull and recessed.





MAST SHROUDS AND SAILS

1.6 MASTING

- Sparcraft aluminium mast, tapered at the head with double spreader rig.
- Sparcraft aluminium boom.
- Rigid boom vang
- Stainless steel wire standing rigging.
- Through-deck jib furling unit (Furlex TD).
- Spectra main and jib halyards.
- Harken blocks, tracks and hardware
- Centreline backstay with Harken mechanical adjuster





INTERIOR

Standard interior furnishings are mahogany treated with polyurethane and then buffed to shine. The interior boasts an excellent calibre of finishing throughout. The owner can for an additional sum, also choose light Oak or teak joinery. The cabin sole is in 15 mm thick plywood, and compliments the Joinery chosen by the owner. Settee and berth cushions are covered with pre-washed cotton.

2.1 OWNER CABIN

- Double bed
- 2 stowage drawers under bed
- Shelves along hull sides
- 2 double-door wardrobes with hangers and shelves.
- 3 flush hatches with blinds
- 2 reading lights
- 12V plug.





2.2 MAIN SALOON

- Wide, light and airy saloon
- Spacious "L" shaped sofa with folding dining table.
- Wide sofa on starboard side.
- Stowage rack and numerous side lockers
- 2 flush hatches with blinds
- 4 hull portholes flush mounted to improve fluid dynamics

2.3 NAVIGATION STATION

- Chart table with compartment space
- Large electronic instruments panel.
- 12V socket.
- 220V socket.
- Chart LED light.
- Seating
- Main electric control panel for 220V and 12V sections.

2.4 GALLEY

- Double stainless steel sink.
- Wooden galley work top (resin coat optional)
- Pressurised hot and cold fresh water.
- Hinged door with rubbish bin.
- 2 burner gas stove with oven.
- Top access fridge compartment with baskets and 12V compressor.
- 5 Drawers with amortised closure
- Stowage above work top and plate rack.
- 12V socket.
- 220V socket.

2.5 STARBOARD AFT HEAD

- Marine toilet.
- Wash basin with hot/cold pressure tap
- Small extendable shower on sliding column
- Mirror.
- Bathroom cabinet.
- Sensor-equipped electric pump to drain shower bilge automatically or manually.

2.6 PORT AND STARBOARD AFT CABINS

- Double bed
- Double-door wardrobe with hangers, shelves and shoe compartment.
- Shelf on hull sides
- Ventilation and light provided by 2 opening port holes, 1 for each cabin.
- Stowage niche near engine compartment
- 2 wide access panels to engine and technical compartment for inspection.
- 12V socket.
- 2 reading lights.
- Ceiling lights.





» DECK EQUIPMENT

3.1 MOORING CLEATS

- 4 mooring cleats with stainless steel chafe protection strips on hull side

3.2 HATCHES AND PORTHOLE

- 3 flush hatches in bow cabin.
- 2 flush hatches above saloon.
- 2 portholes, one for each aft cabin.
- 2 flush portholes mounted on coachroof windows.
- 4 fixed hull windows mounted flush to reduce friction.

3.3 LOCKERS

- Self draining anchor locker with piston to hold lid open.
- 2 lockers under cockpit seating, one holding life raft
- 1 large central locker in the stern area



3.4 WINCHES

- “T” mainsail control system to maximise control
- Mainsail traveller placed in specific cockpit bottom recess
- 2 x 46.2 STA Radial Harken winches for genoa sheets.
- 2 x 40.2 STA Radial Harken winches for halyards
- 2 x 40.2 STA Radial Harken winches for mainsail sheets.
- 2 Harken winch handles with stowage pockets.
- 7 Spinlock stoppers for halyards and reefing lines.
- 1 Spinlock Stopper on the gunwhale for furling unit
- Jib tracks are recessed on the coachroof to give optimal sheeting angle without the need for inhaulers.

3.5 ANCHOR WINDLASS AND STEMHEAD

- 1000 W Quick electrically powered anchor windlass
- Electrowelded stainless steel anchor stemhead.
- Stainless Steel rollers for the anchor with Teflon bushes.

3.6 PULPITS AND STANCHIONS

- 25mm diameter stainless steel stanchions
- 5 mm stainless steel cable guardrails with turnbuckles
- Open bow pulpit with built-in navigation LED support.
- Split stern pushpit with built-in navigation LED support.

3.7 DECK FINISHES

- Cockpit seats clad in 8 mm vacuum-bonded teak.
- Cockpit floor, running deck and coachroof clad with white non-skid.
- 2 lifting steering wheel footrests
- Moulded recess for optional sprayhood.
- All halyards and reefing lines are led back to the cockpit under the deck.
- Self draining cockpit.
- Hot and cold shower in cockpit.
- Engine control lever on starboard side.
- Housing for optional electronics on aft side of each cockpit seat.

» MOTORISATION

4.1 ENGINE

- Volvo D2 29hp diesel with S-drive and 2 fixed blade propellor
- Alternator for charging batteries.

4.3 FUEL TANK

- Tank fabricated in stainless steel.
- 150 lt fuel tank.
- Electronic level indicator with inspection hatch to float
- Easy-to-access fuel filter.

4.2 EQUIPMENT ROOM

- Engine room insulation in flameproof material chosen for heat insulation and to deaden sound
- Electrically powered engine compartment extraction fan





ELECTRICAL EQUIPMENT

- The main electrical system on board is 12 V.
- 220V section with shore cable

5.1 BATTERIES

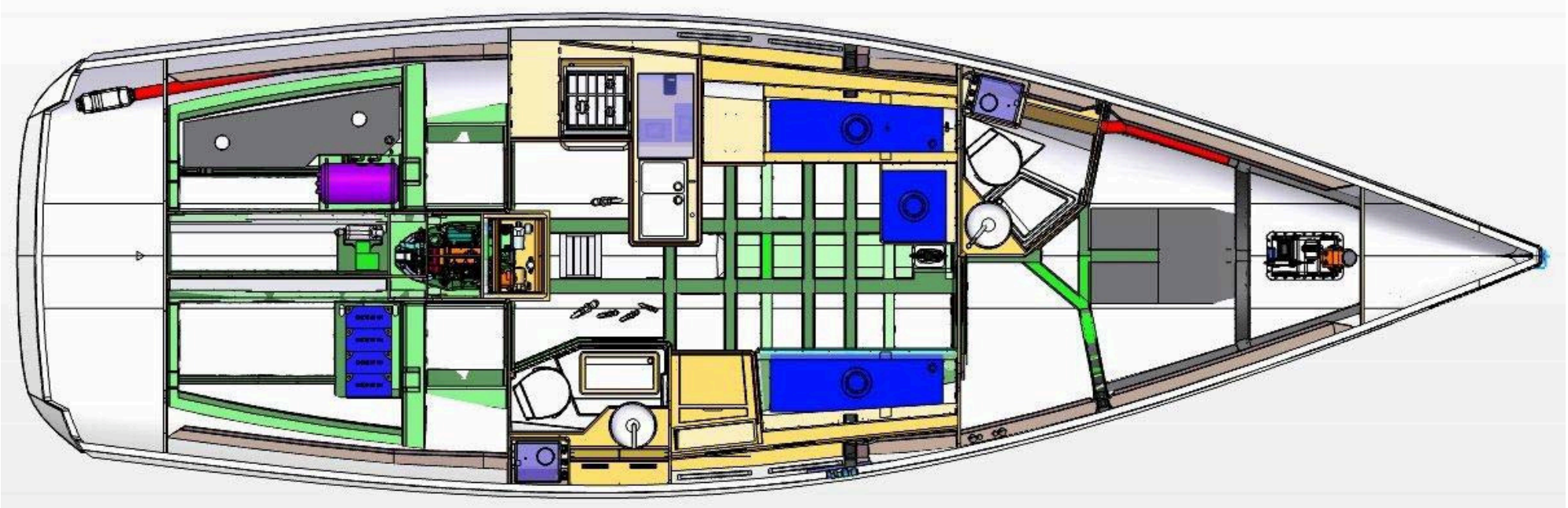
- 2x90 Ah / 12V AGM batteries for service.
- 1x70 Ah / 12V AGM battery for engine start ing.
- Quick SBC 700 40AH automatic battery charger.

5.2 ELECTRIC CONTROL PANEL

- Electric control panel with cut-out switches, voltmeter showing service consumption
- All wiring and cables pass through special inner tubes and junction boxes for easy maintenance.
- 12V sockets in the galley, chart table, owner, vip and guest cabins.
- 220 socket in navigation station and galley.

5.3 LIGHTING

- LED lamps ensure adequate lighting for all the interior.
- Navigation, anchor, running, deck, compass and instruments lights.
- Starboard and port LED lights (green and red).
- White LED stern light.



» PLUMBING SYSTEM

6.1 FRESH WATER TANKS

- 2 rigid polyethylene water tanks with an approx capacity of 260 litres complete with inspection covers.
- Tanks are placed at centre of boat below the dining area seats to optimise weight distribution.

6.2 PUMPS

- 1 automatic electric pump for stern shower
- Automatic electric pump for main bilge.
- Hand operated cockpit bilge pump.
- Autoclave pump for hot and cold fresh water.

6.3 BOILER

- 25 lt boiler with immersion element running from shore power.
- Operating through heat exchanger system with the engine (cooling circuit).

6.4 PIPING AND SEACOCKS

- Seacocks are mounted flush on the hull to minimise friction.
- Seacocks are easily accessible and have a bronze quick closing ball valve.
- Piping of hot and cold water in rigid PVC.
- All piping for drains and bilge pumps is made from special reinforced rubber.

NOTE

This document does not constitute a contractual offer, but is purely informative and promotional. Cantiere del Pardo reserves the right, at its sole discretion, to modify, improve, substitute, change, alter, remove the specification hereof as well as to cease the distribution, market or production of certain equipment, without prior notice being due.

As a consequence thereof, no indemnity, claim exception or argument could be raised to Cantiere del Pardo. 01/06/2011

39

CANTIERE DEL PARDO Holding Srl

Via Fratelli Lumière, 34

47122 Forlì (FC) - Italy

Tel: +39 0543 782404

Fax: +39 0543 782405

e-mail: info@grandsoleil.net

